



MAYNARDVILLE CLASSIC 66



MAYNARDVILLE CLASSIC 66 Model number: 22MAC16663AH20

3 beds • 2 baths • 1056 sq.ft. • 16' width • 66' depth

Our home building facilities invest in continuous product and process improvements. Plans, dimensions, features, materials, specifications and availability are subject to change without notice or obligation. Renderings and floor plans are representative likenesses of our homes and may differ from the actual homes. We invite you to tour a Home Center near you and inspect the highest value in quality housing available or call (828) 684-1550 to speak with a Home Consultant. Copyright 2017, CMH. All rights reserved.

<https://www.oakwoodhomesofhendersonville.com>

**OAKWOOD HOMES-
FLETCHER**

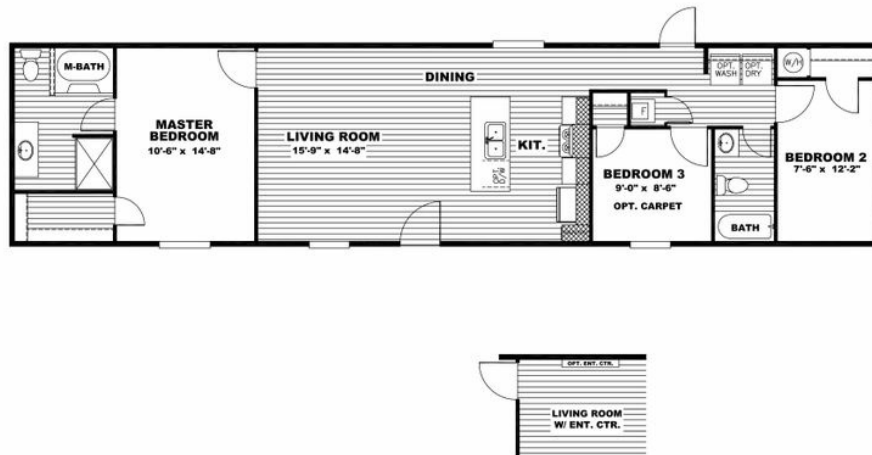
**5250 HENDERSONVILLE
HIGHWAY
FLETCHER, NC 28732**

Monday - Thursday: 9am - 6pm
Friday: 9am - 6pm
Saturday: 9am - 5pm
Sunday: Closed

(828) 684-1550



MAYNARDVILLE CLASSIC 66



MAYNARDVILLE CLASSIC 66 Model number: 22MAC16663AH20

3 beds • 2 baths • 1056 sq.ft. • 16' width • 66' depth

Our home building facilities invest in continuous product and process improvements. Plans, dimensions, features, materials, specifications and availability are subject to change without notice or obligation. Renderings and floor plans are representative likenesses of our homes and may differ from the actual homes. We invite you to tour a Home Center near you and inspect the highest value in quality housing available or call (828) 684-1550 to speak with a Home Consultant. Copyright 2017, CMH. All rights reserved.

<https://www.oakwoodhomesofhendersonville.com>

**OAKWOOD HOMES-
FLETCHER**

**5250 HENDERSONVILLE
HIGHWAY
FLETCHER, NC 28732**

Monday - Thursday: 9am - 6pm
Friday: 9am - 6pm
Saturday: 9am - 5pm
Sunday: Closed

(828) 684-1550